

©2020 Hangzhou Hikvision Digital Technology Co., Ltd. All rights reserved.

About this Manual

The Manual includes instructions for using and managing the Product. Pictures, charts, images and all other information hereinafter are for description and explanation only. The information contained in the Manual is subject to change, without notice, due to firmware updates or other reasons. Please find the latest version of this Manual at the Hikvision website (<https://www.hikvision.com/>). Please use this Manual with the guidance and assistance of professionals trained in supporting the Product.

HIKVISION and other Hikvision's trademarks and logos are the properties of Hikvision in various jurisdictions. Other trademarks and logos mentioned are the properties of their respective owners.

Disclaimer
TO THE MAXIMUM EXTENT PERMITTED BY APPLICABLE LAW, THIS MANUAL AND THE PRODUCT DESCRIBED, WITH ITS HARDWARE AND FIRMWARE, ARE PROVIDED "AS IS" AND "WITH ALL FAULTS AND ERRORS". HIKVISION MAKES NO WARRANTIES, EXPRESS OR IMPLIED, INCLUDING WITHOUT LIMITATION, MERCHANTABILITY, SATISFACTORY QUALITY, OR FITNESS FOR A PARTICULAR PURPOSE. THE USE OF THE PRODUCT BY YOU IS AT YOUR OWN RISK. IN NO EVENT WILL HIKVISION BE LIABLE TO YOU FOR ANY SPECIAL, CONSEQUENTIAL, INCIDENTAL, OR INDIRECT DAMAGES, INCLUDING, AMONG OTHERS, DAMAGES FOR LOSS OF BUSINESS PROFITS, BUSINESS INTERRUPTION, OR LOSS OF DATA, CORRUPTION OF SYSTEMS, OR LOSS OF DOCUMENTATION, WHETHER BASED ON BREACH OF CONTRACT, TORT (INCLUDING NEGLIGENCE), PRODUCT LIABILITY, OR OTHERWISE, IN CONNECTION WITH THE USE OF THE PRODUCT, EVEN IF HIKVISION HAS BEEN ADVISED OF THE POSSIBILITY OF SUCH DAMAGES OR LOSS.

YOU ACKNOWLEDGE THAT THE NATURE OF INTERNET PROVIDES FOR INHERENT SECURITY RISKS, AND HIKVISION SHALL NOT TAKE ANY RESPONSIBILITIES FOR ABNORMAL OPERATION, PRIVACY LEAKAGE OR OTHER DAMAGES RESULTING FROM CYBER-ATTACK, HACKER ATTACK, VIRUS INSPECTION, OR OTHER INTERNET SECURITY RISKS; HOWEVER, HIKVISION WILL PROVIDE TIMELY TECHNICAL SUPPORT IF REQUIRED.

YOU AGREE TO USE THIS PRODUCT IN COMPLIANCE WITH ALL APPLICABLE LAWS, AND YOU ARE SOLELY RESPONSIBLE FOR ENSURING THAT YOUR USE CONFORMS TO THE APPLICABLE LAW. ESPECIALLY, YOU ARE RESPONSIBLE, FOR USING THIS PRODUCT IN A MANNER THAT DOES NOT INFRINGE ON THE RIGHTS OF THIRD PARTIES, INCLUDING WITHOUT LIMITATION, RIGHTS OF PUBLICITY, INTELLECTUAL PROPERTY RIGHTS, OR DATA PROTECTION AND OTHER PRIVACY RIGHTS. YOU SHALL NOT USE THIS PRODUCT FOR ANY PROHIBITED END-USES, INCLUDING THE DEVELOPMENT OR PRODUCTION OF WEAPONS OF MASS DESTRUCTION, THE DEVELOPMENT OR PRODUCTION OF CHEMICAL OR BIOLOGICAL WEAPONS, ANY ACTIVITIES IN THE CONTEXT RELATED TO ANY NUCLEAR EXPLOSIVE OR UNSAFE NUCLEAR FUEL-CYCLE, OR IN SUPPORT OF HUMAN RIGHTS ABUSES.

IN THE EVENT OF ANY CONFLICTS BETWEEN THIS MANUAL AND THE APPLICABLE LAW, THE LATER PREVAILS.

CE This product and - if applicable - the supplied accessories too are marked with "CE" and comply therefore with the applicable harmonized European standards listed under the EMC Directive 2014/30/EU, the RE Directive 2014/53/EU, the RoHS Directive 2011/65/EU.



2012/19/EU (WEEE directive): Products marked with this symbol cannot be disposed of as unsorted municipal waste in the European Union. For proper recycling, return this product to your local supplier upon the purchase of equivalent new equipment, or dispose of it at designated collection points. For more information see: www.recyclethis.info

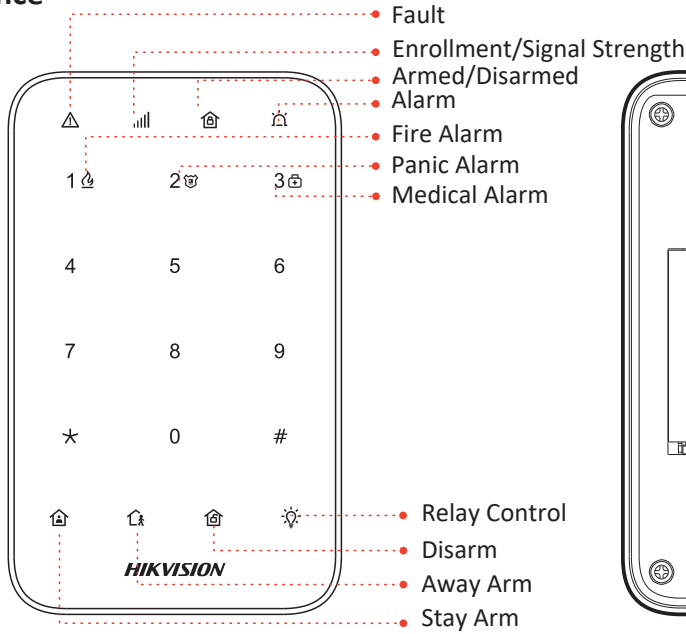


replacement of a battery with an incorrect type that can defeat a safeguard (for example, in the case of some lithium battery types);
- disposal of a battery into fire or a hot oven, or mechanically crushing or cutting of a battery, that can result in an explosion;
- leaving a battery in an extremely high temperature surrounding environment that can result in an explosion or the leakage of flammable liquid or gas; and
- a battery subjected to extremely low air pressure that may result in an explosion or the leakage of flammable liquid or gas

2006/66/EC (battery directive): This product contains a battery that cannot be disposed of as unsorted municipal waste in the European Union. See the product documentation for specific battery information. The battery is marked with this symbol, which may include lettering to indicate cadmium (Cd), lead (Pb), or mercury (Hg). For proper recycling, return the battery to your supplier or to a designated collection point. For more information see: www.recyclethis.info

1 Introduction

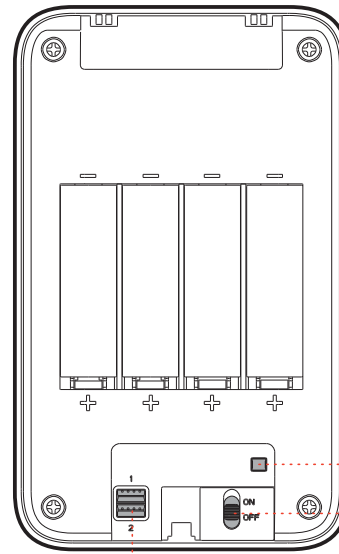
2 Appearance



CAUTION
RISK OF EXPLOSION IF BATTERY IS REPLACED BY AN INCORRECT TYPE.
REPLACEMENT OF A BATTERY WITH AN INCORRECT TYPE THAT CAN DEFEAT A SAFEGUARD.

CAUTION
CHEMICAL BURNING DANGER
DO NOT SWALLOW THE BATTERY
KEEP NEW AND USED BATTERIES AWAY FROM THE CHILDREN.
IF YOU THINK BATTERIES MIGHT HAVE BEEN SWALLOWED OR PLACED INSIDE ANY PART OF THE BODY, SEEK IMMEDIATE MEDICAL ATTENTION.

CAUTION
DISPOSE OF USED BATTERIES ACCORDING TO THE INSTRUCTIONS AND LOCAL REGULATION.



• Tamper Switch
• Power Switch
• Serial Port

3 Indication

LED Indication Description

	With Fault	Solid orange for 3 s and then off		Enrollment	Flashing red and green: Enrolling Green flashes 7 times: Enrolled
	No Fault	Off		Signal Strength	Solid green for 3 s: Strong Solid orange for 3 s: Medium Solid red for 3 s: Weak Flashing red for 3 s: Disconnected
	Tampering Alarm	Solid red		Find Me	Flashing green for 20 s: Operating
	Event Alarm	Flashing red		Power On	Solid green for 1 s: Powered on
	No Alarm	Off		Note: Event Alarm Priority > Tampering Alarm Priority	
	Armed	Solid blue for 5 s	Back Light -The back light is on by default, you can set the On/Off schedule on the web client of the control panel. Refer to the user manual of control -It turns off when there is no key operation for more than 10 s. -If the keypad is not enrolled to the control panel, the back light is off.		
	Arming Failed	Blue turns Off			
	Disarmed	Green flashes 2 times			
	Disarming Failed	Green turns Off			

Buzzer Description

Operation completed: Beep twice
Operation failed: Beep three times

4 Enrollment

1. Remove the screw on the bottom of the keypad.
2. Disassemble the keypad and remove the rear panel.
3. Power on the security control panel.
4. Log in the Hik-Connect APP and tap the icon "+". Scan the QR code or input the control panel serial No. to add the control panel.
5. Enroll the peripheral locally, with OR code, or with serial No..

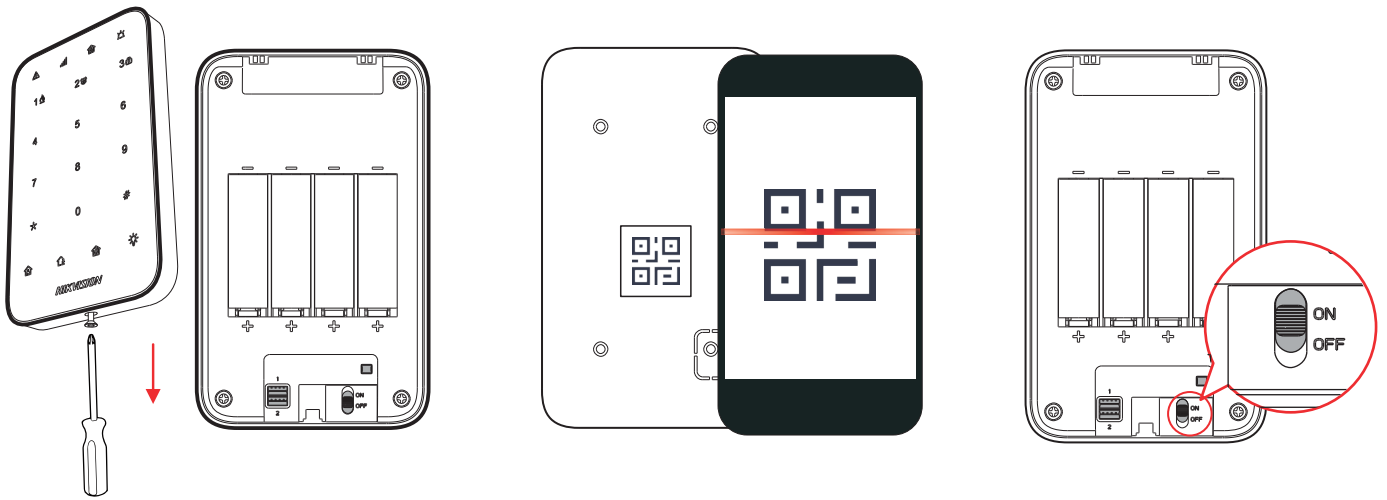
Enroll the Peripheral Locally

1. In the APP, tap the "Enrollment Mode" button on the control panel page to make the control panel enter the enrollment status.
2. Push the power switch of the peripheral to on, and it will be automatically enrolled to the control panel.

Enroll the Peripheral with QR Code or Serial No.

1. In the APP, tap the icon "+" and scan the QR code or enter the serial No. on the peripheral.
2. Push the power switch of the peripheral to on, and it will be automatically enrolled to the control panel.

Note: for re-enrollment, you need to hold the tamper button while powering the peripheral on simultaneously.



Remove the screw on the bottom of the keypad.
Disassemble the keypad and remove the rear panel.

Scan the QR code on the rear panel of the keypad.

Push the power switch to ON.

5 Installation

Note: The additional force shall be equal to three times the weight of the equipment but not less than 50N. The equipment and its associated mounting means shall remain secure during the installation. After the installation, the equipment, including any associated mounting plate, shall not be damaged.

Check signal strength and select installation place

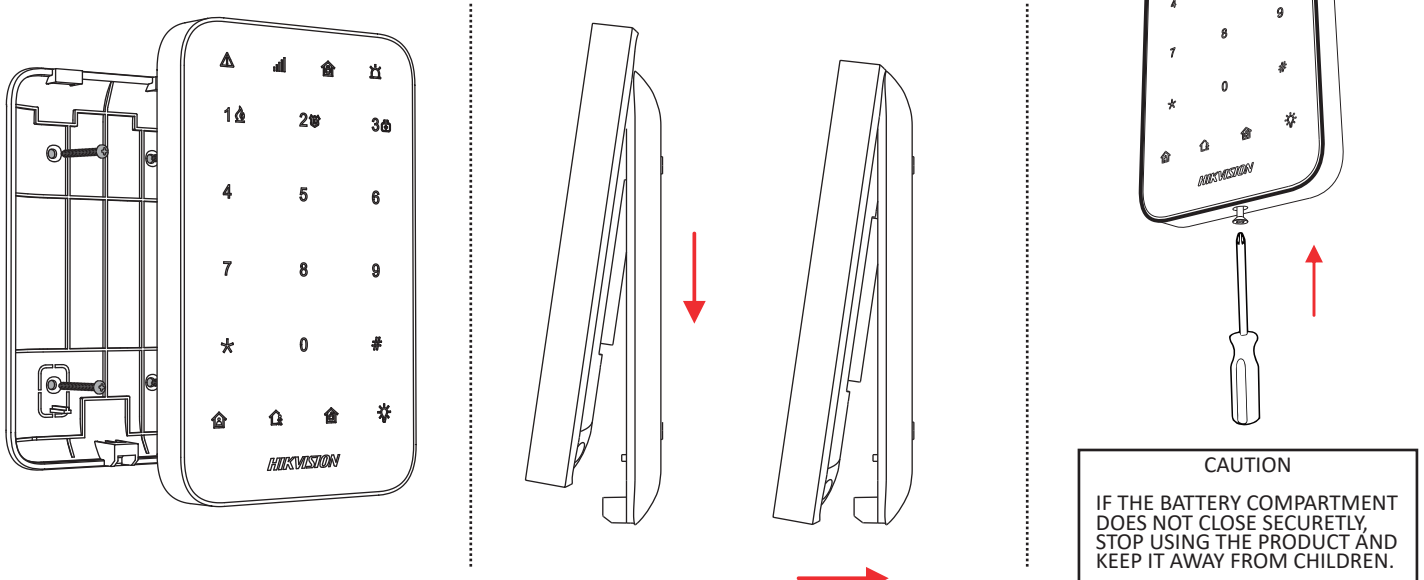
Enter the signal checking mode by operating on the control panel.

Signal LED turns green for 3 s: Strong.

Signal LED turns orange for 3 s: Medium.

Signal LED turns red for 3 s: Weak.

Signal LED flashes red for 3 s: Disconnected.



1. Secure the rear panel on the wall with four supplied screws.

2. Attach the front panel onto the rear panel.

3. Tighten the screw on the bottom to complete the

6 Command

The keypad command is shown as follows.

Events	Codes	Notes
Away arm	Away arming for all areas: User password + Away	
	Away arming for specified area: User password + # + Area No.(1,2,3,4,5,6,7,8,9,0,10,011,012....) + away	-The keypad does not display area No. greater than 9. -If the area No. is greater than 9, enter " OXX"for the No.."0"indicates tens digits, and "XX"indicates the actual area No. -If the selected area is not related to the keypad,the back light of "0" will flashes three times.
Stay arm	Stay arming for all areas: User password + Stay	
	Stay arming for specified area: User password + # + Area No.(1,2,3,4,5,6,7,8,9,0,10,011,012....) + Stay	-The keypad does not display area No. greater than 9. -If the area No. is greater than 9, enter " OXX"for the No.."0"indicates tens digits, and "XX"indicates the actual area No. -If the selected area is not related to the keypad,the back light of "0" will flashes three times.
Disarm	Disarming for all areas: User password + Disarm	
	Disarming for specified area: User password + # + Area No.(1,2,3,4,5,6,7,8,9,0,10,011,012....) + Disarm	-The keypad does not display area No. greater than 9. -If the area No. is greater than 9, enter " OXX"for the No.."0"indicates tens digits, and "XX"indicates the actual area No. -If the selected area is not related to the keypad,the back light of "0" will flashes three times.
Clear alarm	User Password+Hold Disarm	
Fire	Hold "1/Fire Alarm" for 3 s	The Buzzer will beep three times for failure operation.
PA	Hold "2/Panic Alarm" for 3 s	The Buzzer will beep three times for failure operation.
Medical	Hold "3/Medical" for 3 s	The Buzzer will beep three times for failure operation.
Duress	(Duress Code)+disarm	You can set the duress code on the web client of the control panel. Refer to the user manual of control panel for details.
Output	User Password+Output+relay No.(1,2,3,4,5,6,7,8,9,0,10,011,012....)+ #	-If the relay No. is greater than 9, enter " OXX" for the No.."0"indicates tens digits, and "XX"indicates the actual relay No. - A successful command execution implement an operation "Off" or "On".

7 Specification

The keypad technical specification is shown as follows.

Wireless Keypad		
RF	Speed	42 Kbps
	Frequency	868 MHz
	Method	2GFSK
	Distance	1200 m (open area)
	Transmission power	13 dbm
Interface	Tamper switch	1, front and rear panel tamper-proof
	Wireless module	For wireless communication
	Power switch	Power on/off
	Buzzer	1
Display	Indicator	4: fault (orange), enrollment/signal (red/green), arming(red/green/blue), and alarm (red)
	Backlight	white
Key	Number key	10: 0 to 9
	Function key	5: *, #, stay arming, away arming, disarming, and output
Operation Environment	Humidity	10% to 90%
	Temperature	- 10°C to +55°C
Appearance	Color	White/Black
	Dimension(W x H x D)	140 x 86 x 22 mm,
Installation	Installation	Screw mounting
Power Supply	Power Supply	1.5 VDC, four AA batteries, standby time more than two years
Weight	Weight without batteries	151 g, and 23 g each battery

Operation

Keypad Status

Working Status	The keypad will enter the sleep status while meeting the following conditions: RF data transmission key operation keypad tampering alarm polling Beeping LED indication
Sleep Status	The keypad will enter the sleep status while meeting the following conditions: No RF data transmission No key operation for more than 10 s No keypad tampering alarm No polling No beeping No LED indication
Enrollment Status	While the keypad is enrolled to a control panel, it enters the enrollment status. Only if the keypad is enrolled, the key operation and status indication take effects.
Free Status	There is no area related to the keypad. The key and back light do not works.

Operation Interval

The interval between the operations (successful or failed) should be more than 3 s.
The continuous operation of the key should be in 10 s.

Keypad Lock

The Keypad will be locked after 3 to 5 failure authentication attempts. You can set the lock time on the web client of the control panel

Arming Process

Pre-delay

Indication:

The arming LED turns flashing blue

Fault Checking

Indication:

The arming LED turns flashing orange
Confirm the operation by press the Arm key

Exit Delay

Indication:

Arming LED turns flashing blue, and the buzzer indicates exit delay.

- **Arm Directly**

Press the Arm key to arm the device.

Indication:

Armed: arming LED solid blue for 5 s. Buzzer beep twice.
Arming failed: Buzzer beeps three time.

- **Disarm**

Press the Disarm key to disarm the device.

Indication:

Armed: Buzzer beeps twice.
Arming failed: Buzzer beeps three time.

- **No Instant Operation**

The count down is finished.

Indication:

Armed: arming LED solid blue for 5 s. Buzzer beep twice.
Arming failed: Buzzer beeps three time.